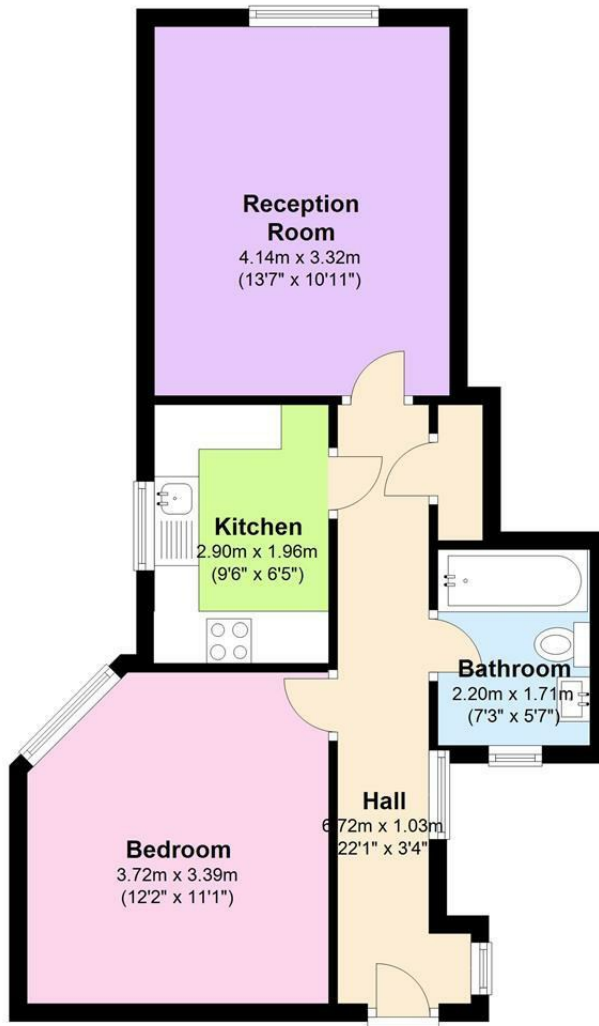




Crescent Road, Crouch End, London £285 Per Week Not specified



Raised Ground Floor

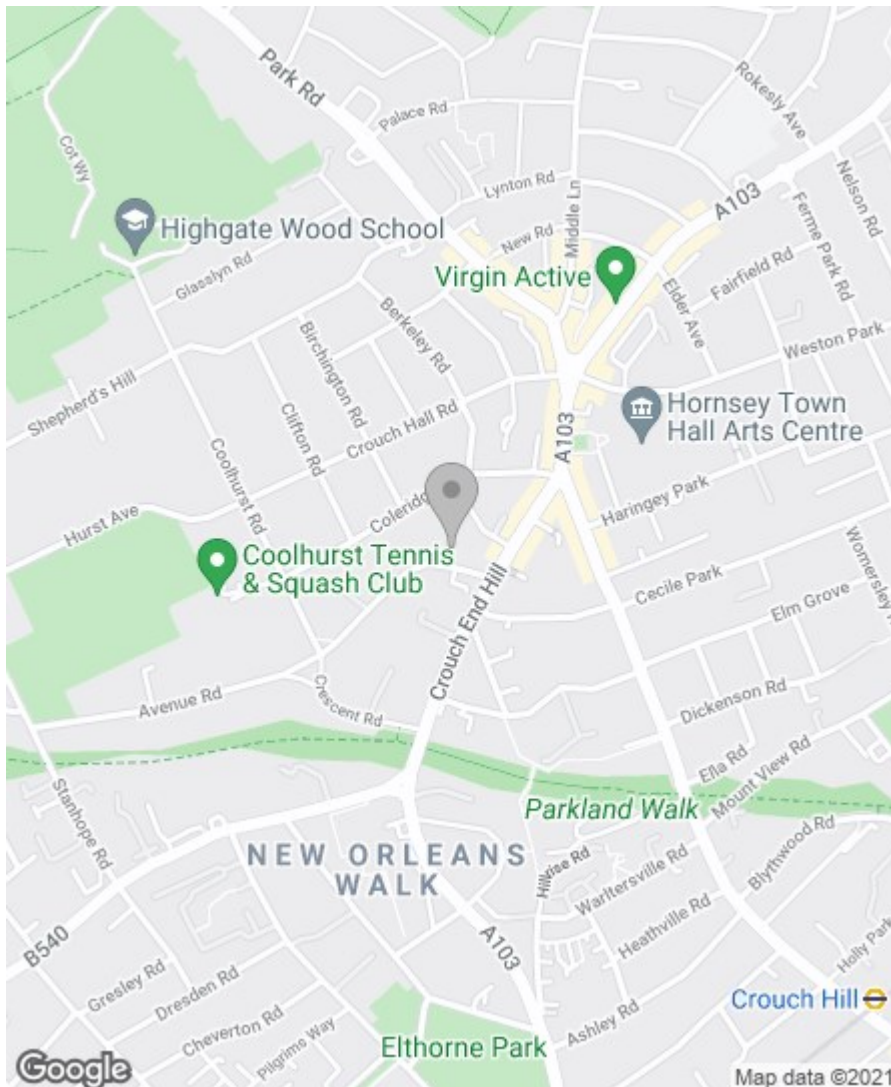


Property Overview

| | |
|------------|----------------|
| Location | Crouch End, N8 |
| Price | £285 Per Week |
| Bedrooms | 1 |
| Bathrooms | 1 |
| Receptions | 1 |
| Council | |
| Tax Band | |
| Furnishing | Not specified |

Key Features

- Newly Refurbished
- New Contemporary Kitchen
- Double Glazing
- Wooden Flooring
- Newly Fitted Bathroom
- Close to Crouch End



Energy Efficiency Rating

| | Current | Potential |
|---|-----------|-----------|
| Very energy efficient - lower running costs | | |
| (92 plus) A | | |
| (81-91) B | | |
| (69-80) C | | 77 |
| (55-68) D | 63 | |
| (39-54) E | | |
| (21-38) F | | |
| (1-20) G | | |
| Not energy efficient - higher running costs | | |

England & Wales

EU Directive
2002/91/EC



Environmental Impact (CO₂) Rating

| | Current | Potential |
|---|-----------|-----------|
| Very environmentally friendly - lower CO ₂ emissions | | |
| (92 plus) A | | |
| (81-91) B | | |
| (69-80) C | | |
| (55-68) D | | 80 |
| (39-54) E | 61 | |
| (21-38) F | | |
| (1-20) G | | |
| Not environmentally friendly - higher CO ₂ emissions | | |

England & Wales

EU Directive
2002/91/EC



IMPORTANT NOTICE: All of the information is intended only as a guide to a prospective purchaser and does not constitute any part of an offer or contract. Any measurements or distances referred to herein are approximate only. Any information contained herein (whether in the text, plans or photographs) is given in good faith and cannot be relied upon as being a statement or representation of fact. Should you proceed with the purchase of the property, your solicitor must verify these details. We have not carried out a detailed survey nor tested the services, appliances and specific fittings. In accordance with current legislation we would advise you that the measurements on these particulars are imperial. The formula for conversion to metric is as follows:- 1' (one foot) = 30.4cm (centimetres), 1m (one metre) = 3'29 (feet).

