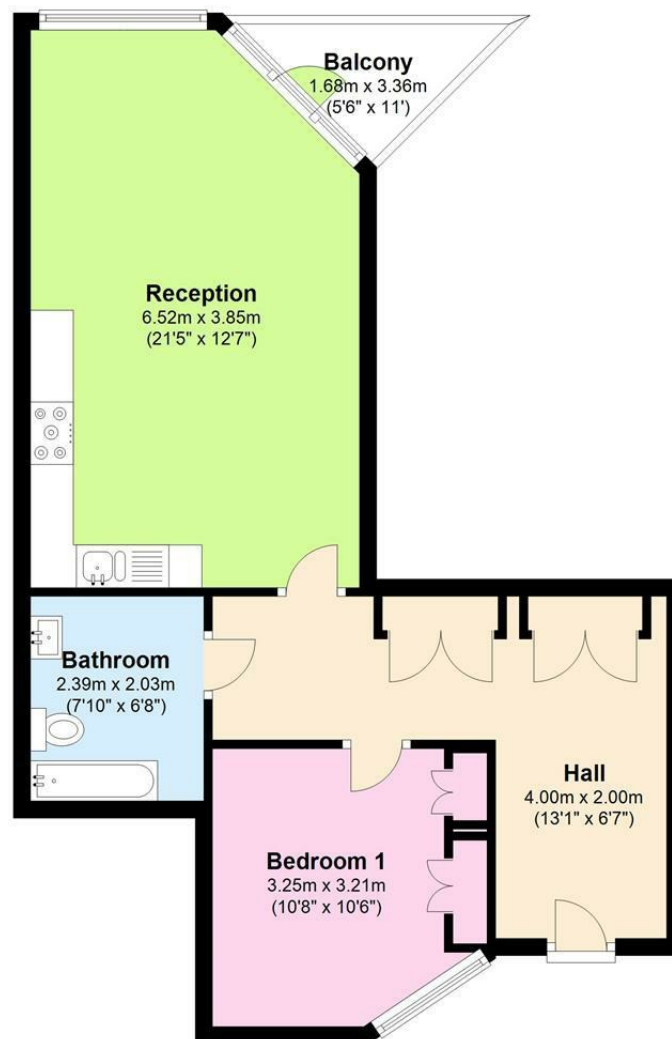




Titan Court - Is This The BEST Block In Mill Hill £315 Per Week Furnished



Third Floor



Property Overview

Location	Mill Hill, NW7
Price	£315 Per Week
Bedrooms	1
Bathrooms	1
Receptions	1
Council	
Tax Band	D
Furnishing	Furnished

Key Features

- Large One Bedroom Flat
- Interior Designed By Alex Thomas
- Heart Of Mill Hill
- State Of The Art White Gloss Kitchen With Integrated Neff Appliances
- American Walnut Flooring In The Hall And Reception Room
- Thermostatically Controlled Under Floor Heating
- Secure Underground Parking Space
- Beautiful Communal Roof Space
- Incredible 360-Degree Views Of London And Stunning Green Belt Countryside
- Offered Furnished!



Energy Efficiency Rating

	Current	Potential
Very energy efficient - lower running costs		
(92 plus) A		
(81-91) B	85	85
(69-80) C		
(55-68) D		
(39-54) E		
(21-38) F		
(1-20) G		
Not energy efficient - higher running costs		

England & Wales

EU Directive
2002/91/EC



Environmental Impact (CO₂) Rating

	Current	Potential
Very environmentally friendly - lower CO ₂ emissions		
(92 plus) A	92	92
(81-91) B		
(69-80) C		
(55-68) D		
(39-54) E		
(21-38) F		
(1-20) G		
Not environmentally friendly - higher CO ₂ emissions		

England & Wales

EU Directive
2002/91/EC



IMPORTANT NOTICE: All of the information is intended only as a guide to a prospective purchaser and does not constitute any part of an offer or contract. Any measurements or distances referred to herein are approximate only. Any information contained herein (whether in the text, plans or photographs) is given in good faith and cannot be relied upon as being a statement or representation of fact. Should you proceed with the purchase of the property, your solicitor must verify these details. We have not carried out a detailed survey nor tested the services, appliances and specific fittings. In accordance with current legislation we would advise you that the measurements on these particulars are imperial. The formula for conversion to metric is as follows:- 1' (one foot) = 30.4cm (centimetres), 1m (one metre) = 3'29 (feet).