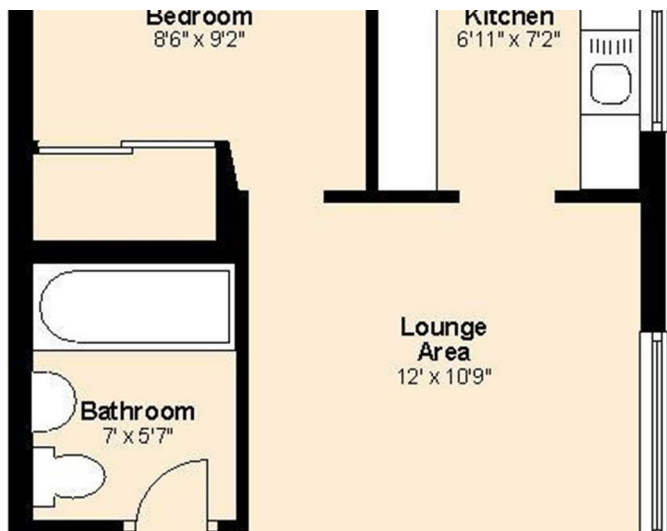
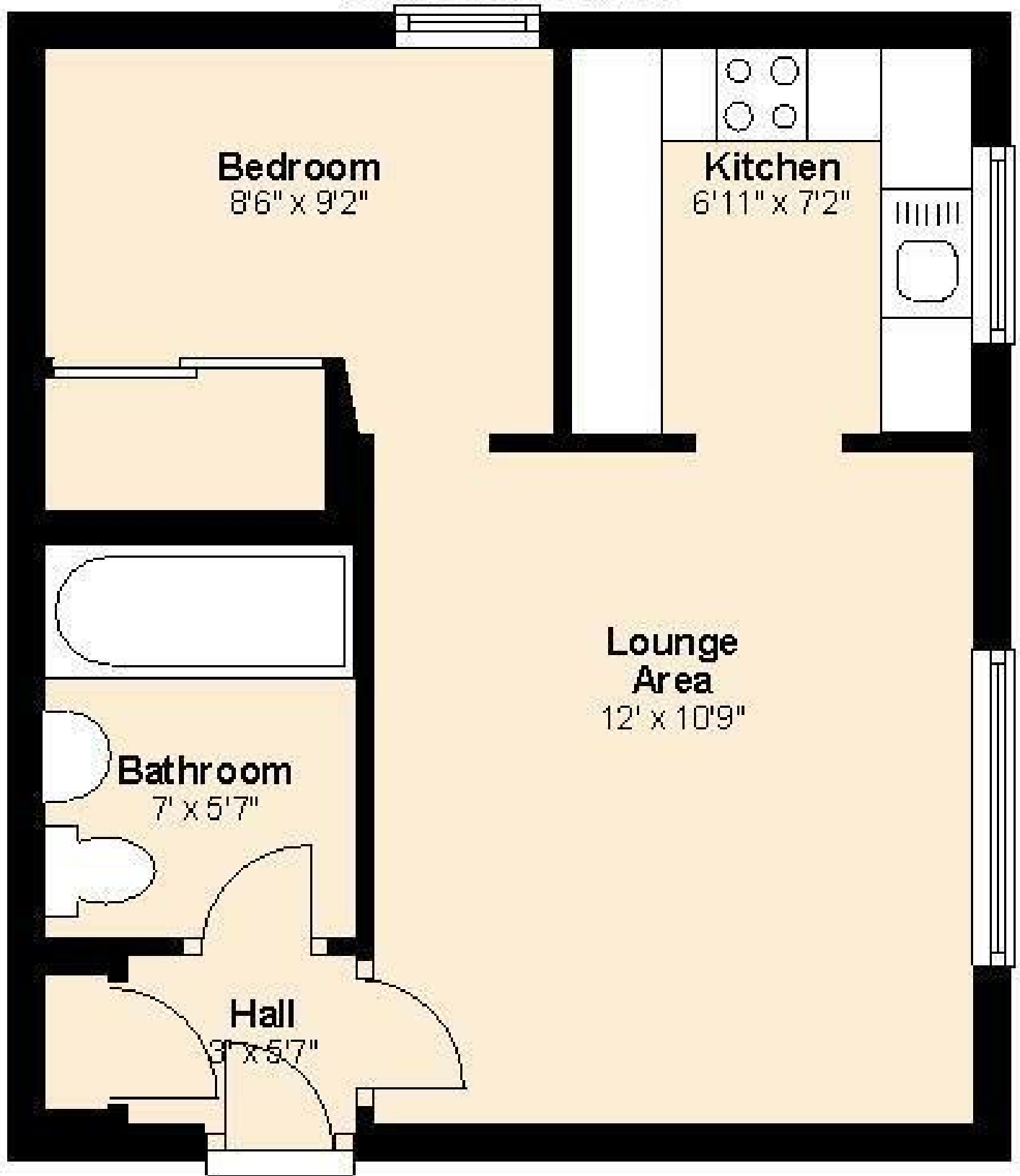




Sybil Phoenix Close, London £215 Per Week Furnished



Ground Floor

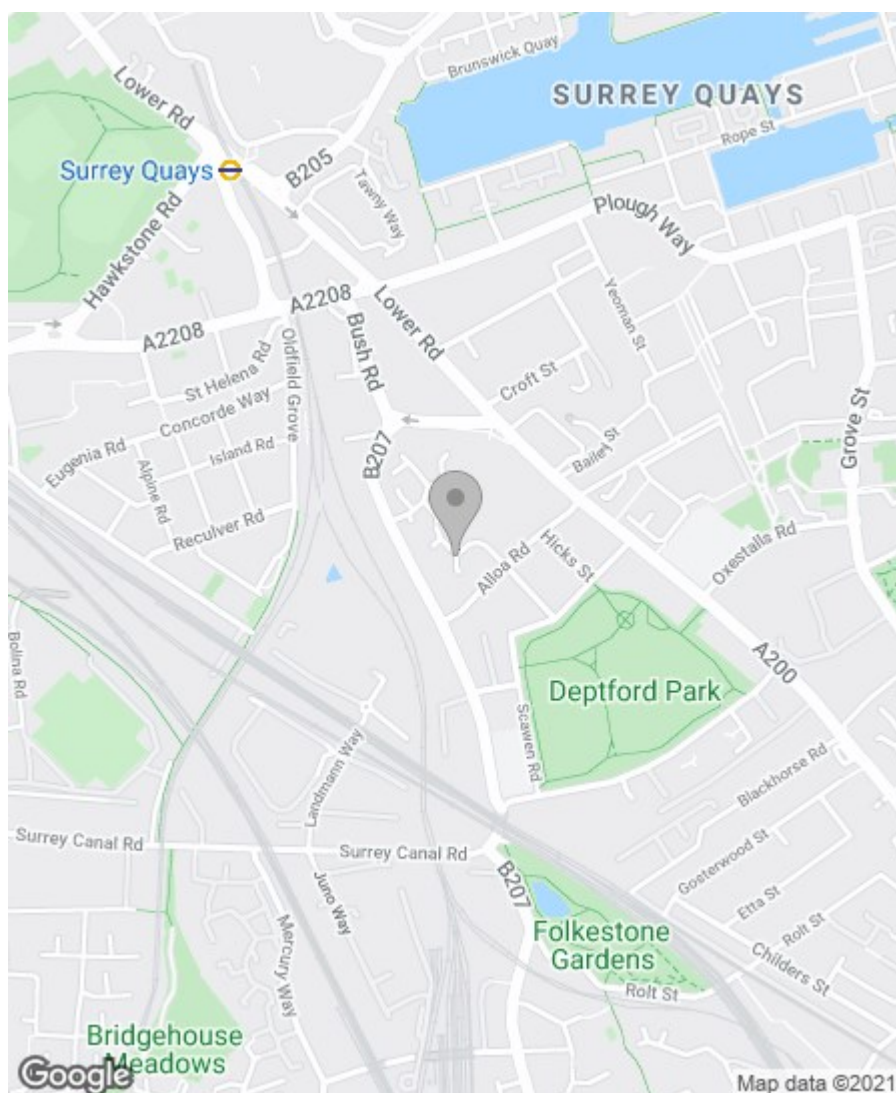


Property Overview

Location	Surrey Quays, SE8
Price	£215 Per Week
Bedrooms	0
Bathrooms	1
Receptions	1
Council	
Tax Band	B
Furnishing	Furnished

Key Features

- Large Studio Flat
- Large Separate Sleeping Alcove
- Double Glazing
- Wooden Floors
- Fantastic Kitchen
- Wonderful Modern Bathroom
- Free Parking (1st come, 1st serve basis)
- Moments from Deptford Park
- HIGHLY RECOMMENDED



Energy Efficiency Rating

	Current	Potential
Very energy efficient - lower running costs		
(92 plus) A		
(81-91) B		
(69-80) C		
(55-68) D		
(39-54) E		
(21-38) F		
(1-20) G		
Not energy efficient - higher running costs		

England & Wales

EU Directive
2002/91/EC



Environmental Impact (CO₂) Rating

	Current	Potential
Very environmentally friendly - lower CO2 emissions		
(92 plus) A		
(81-91) B		
(69-80) C		
(55-68) D		
(39-54) E		
(21-38) F		
(1-20) G		
Not environmentally friendly - higher CO2 emissions		

England & Wales

EU Directive
2002/91/EC



IMPORTANT NOTICE: All of the information is intended only as a guide to a prospective purchaser and does not constitute any part of an offer or contract. Any measurements or distances referred to herein are approximate only. Any information contained herein (whether in the text, plans or photographs) is given in good faith and cannot be relied upon as being a statement or representation of fact. Should you proceed with the purchase of the property, your solicitor must verify these details. We have not carried out a detailed survey nor tested the services, appliances and specific fittings. In accordance with current legislation we would advise you that the measurements on these particulars are imperial. The formula for conversion to metric is as follows:- 1' (one foot) = 30.4cm (centimetres), 1m (one metre) = 3'29 (feet).