



Strathmore Court, St Johns Wood, NW8



Opposite Regents Park and minutes to Baker a great opportunity to rent a one bed apartment in small portered block !

We are pleased to offer this 334 Sq Ft Ground floor 1 bedroom 1 bathroom apartment set within the ported building opposite Regents Park.

This apartment would suit the young sharer/student and is within a 10 minute walk of St John's Wood underground station (Jubilee Line) Marylebone Station (Bakerloo and National Railway) and Lords Cricket Ground along with its many cafés, restaurants and boutique shops associated with such an inspiring area, as well as being a short ride to the West End for its famous theatres, museums and world famous designer shops.

Also close to hand are the many universities and colleges including, University of Westminster, Royal College of Physicians, as well as The London Business School.

Westminster band C £ 611.68 pa
EPC - D

£375 Per Week Subject to contract

Lettings: 020 7625 1000
Sales: 020 7625 7000



www.greenstone.com



www.facebook.com/greenstoneproperty



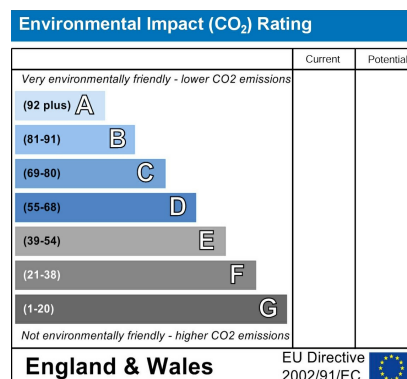
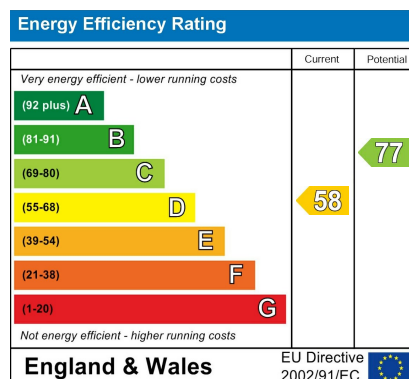
www.twitter.com/lewisgreenstone



www.youtube.com/user/greenstone



Greenstone Estates Limited
83 Boundary Road
St John's Wood
London NW8 0RG



Lettings: 020 7625 1000
Sales: 020 7625 7000



www.greenstone.com



www.facebook.com/greenstoneproperty

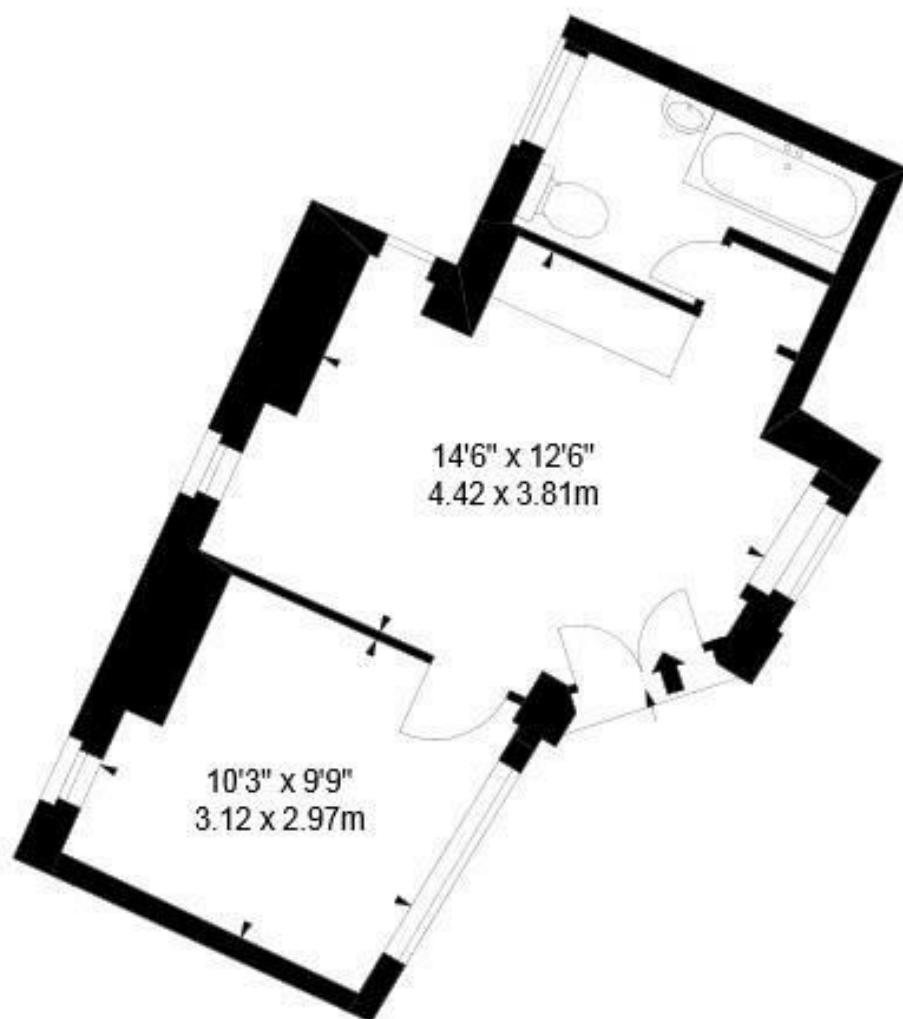


www.twitter.com/lewisgreenstone



www.youtube.com/user/greenstone





IMPORTANT NOTICE All of the information is intended only as a guide to a prospective purchaser and does not constitute any part of an offer or contract. Any measurements or distances referred to herein are approximate only. Any information contained herein (whether in the text, plans or photographs) is given in good faith and cannot be relied upon as being a statement or representation of fact. Should you proceed with the purchase of the property, your solicitor must verify these details. We have not carried out a detailed survey nor tested the services, appliances and specific fittings. In accordance with current legislation we would advise you that the measurements on these particulars are imperial. The formula for conversion to metric is as follows:- 1' (one foot) = 30.4cm (centimetres), 1m (one metre) = 3'29 (feet).