



## Princess Court, West Hampstead, NW6 £725,000 null

Set on the second floor ( with lift ) we are delighted to offer this bright 2 double bedroom apartment which comprises a large reception with parquet flooring and balcony to front aspect, separate fully fitted kitchen, 2 double bedrooms and a bathroom with separate WC.

The property also benefits from underground parking and communal gardens

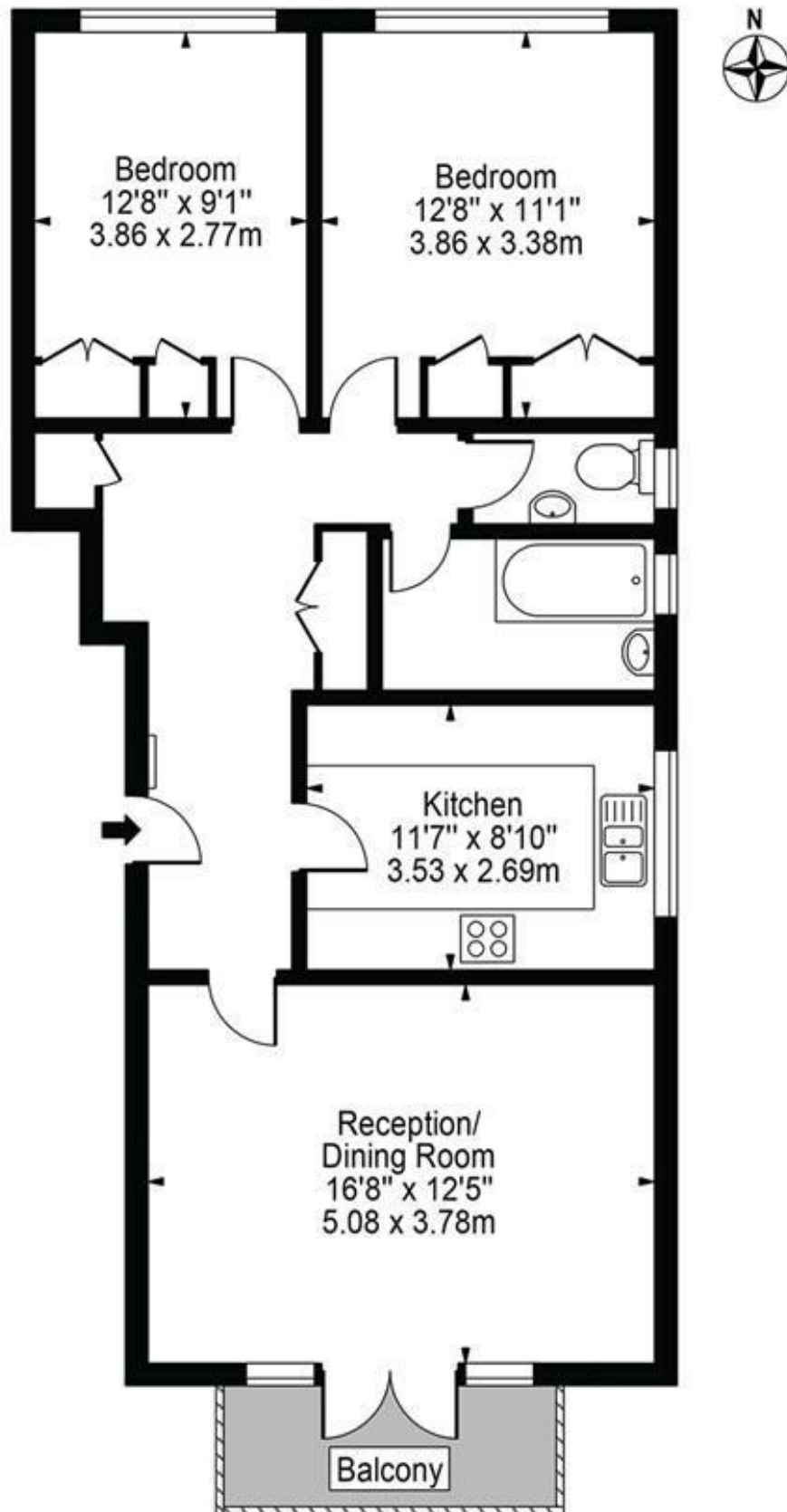
Share of Freehold





# Princess Court, NW6

Approx. Gross Internal Area 802 Sq Ft - 74.51 Sq M



Second Floor

For Illustration Purposes Only - Not To Scale

This floor plan should be used as a general outline for guidance only and does not constitute in whole or in part an offer or contract. Any intending purchaser or lessee should satisfy themselves by inspection, searches, enquiries and full survey as to the correctness of each statement. Any areas, measurements or distances quoted are approximate and should not be used to value a property or be the basis of any sale or let.

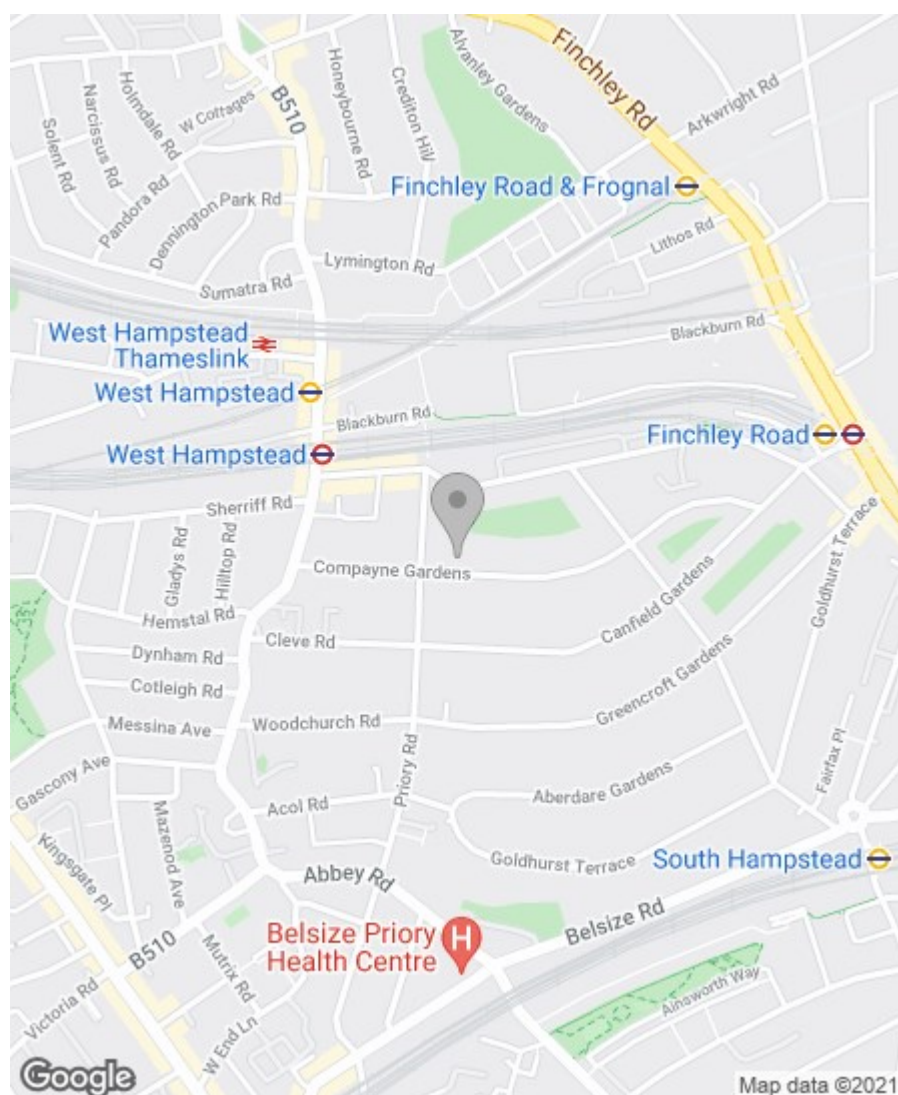


## Property Overview

Location	West Hampstead, NW6
Price	Asking Price £725,000
Bedrooms	2
Bathrooms	1
Receptions	1
Council	
Tax Band	
Furnishing	null

## Key Features

- Large reception
- Balcony
- Parquet flooring
- 2 double bedrooms
- Large kitchen
- Communal gardens
- Underground parking
- Lots of Storage



## Energy Efficiency Rating

	Current	Potential
Very energy efficient - lower running costs		
(92 plus) A		
(81-91) B		
(69-80) C		
(55-68) D		
(39-54) E		
(21-38) F		
(1-20) G		
Not energy efficient - higher running costs		
	77	83

## England & Wales

EU Directive  
2002/91/EC



## Environmental Impact (CO<sub>2</sub>) Rating

	Current	Potential
Very environmentally friendly - lower CO <sub>2</sub> emissions		
(92 plus) A		
(81-91) B		
(69-80) C		
(55-68) D		
(39-54) E		
(21-38) F		
(1-20) G		
Not environmentally friendly - higher CO <sub>2</sub> emissions		
	77	86

## England & Wales

EU Directive  
2002/91/EC



IMPORTANT NOTICE: All of the information is intended only as a guide to a prospective purchaser and does not constitute any part of an offer or contract. Any measurements or distances referred to herein are approximate only. Any information contained herein (whether in the text, plans or photographs) is given in good faith and cannot be relied upon as being a statement or representation of fact. Should you proceed with the purchase of the property, your solicitor must verify these details. We have not carried out a detailed survey nor tested the services, appliances and specific fittings. In accordance with current legislation we would advise you that the measurements on these particulars are imperial. The formula for conversion to metric is as follows:- 1' (one foot) = 30.4cm (centimetres), 1m (one metre) = 3'29 (feet).