



5 Grenville Place | NW7



****VIEWING HIGHLY RECOMMENDED**** This stunning Manhattan style loft apartment located in Mill Hill is perfect for today's modern living. This 2 bedroom, 2 bathroom (1 ensuite) apartment comes with excellent storage, an open plan kitchen and reception room, high ceilings, a brick effect feature wall, underfloor heating and modern lighting. It has been finished and decorated to a high specification throughout. A quiet residential road just a few minutes away from the friendly bustle and buzz of Mill Hill Broadway's shops, restaurants and bars, being only a short walk from Mill Hill Broadway Thameslink Station. The property also comes with a parking bay.

Administration Fee ZERO

Contract Fee ZERO

Inventory check in at cost £140.00 - 160.00

Check out at cost £140.00 - 160.00

£420 Per Week

Lettings: 020 7625 1000
Sales: 020 7625 7000



www.greenstone.com



www.facebook.com/greenstoneproperty

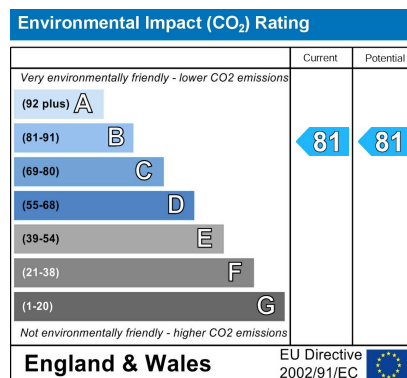
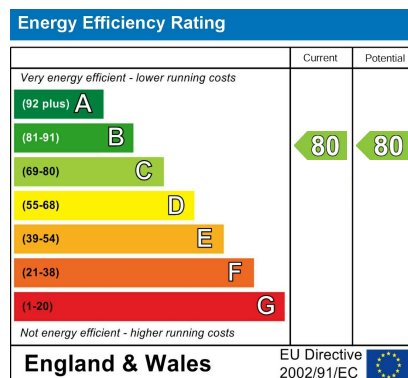
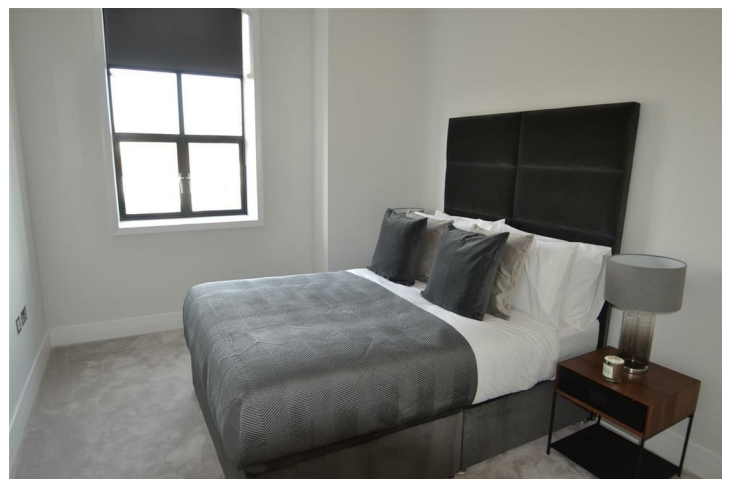
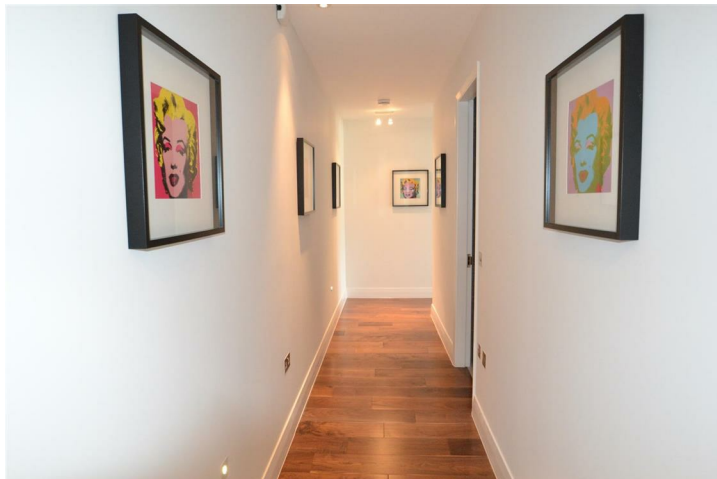


www.twitter.com/lewisgreenstone



www.youtube.com/user/greenstone





Lettings: 020 7625 1000
Sales: 020 7625 7000



www.greenstone.com



www.facebook.com/greenstoneproperty



www.twitter.com/lewisgreenstone



www.youtube.com/user/greenstone



Second Floor

Approx. 91.2 sq. metres (981.3 sq. feet)



Total area: approx. 91.2 sq. metres (981.3 sq. feet)

IMPORTANT NOTICE All of the information is intended only as a guide to a prospective purchaser and does not constitute any part of an offer or contract. Any measurements or distances referred to herein are approximate only. Any information contained herein (whether in the text, plans or photographs) is given in good faith and cannot be relied upon as being a statement or representation of fact. Should you proceed with the purchase of the property, your solicitor must verify these details. We have not carried out a detailed survey nor tested the services, appliances and specific fittings. In accordance with current legislation we would advise you that the measurements on these particulars are imperial. The formula for conversion to metric is as follows:- 1' (one foot) = 30.4cm (centimetres), 1m (one metre) = 3'29 (feet).