



## Harewood Avenue | NW1



**\*\*MARYLEBONE WITH PRIVATE PATIO\*\***- Newly refurbished large 1 bedroom flat just moments from Marylebone Station, BNP Paribas, London Business School and within a short walk of Regents Park, Marylebone High Street and the West End. Located on the lower ground floor this flat is finished to a very high standard with a beautiful contemporary fully fitted kitchen and bathroom, large bedroom, additional storage, private decked patio garden, wooden floors. With some of the finest restaurants, pubs and nightlife on your doors step this property, which is located in a quiet street adjacent to Marylebone station really does tick all the boxes. Great location, fantastic flat and **HIGHLY RECOMMENDED**.

Referencing fees - ZERO  
Contract FEE - Zero  
Inventory make - at Cost - approx £130.00 - £150.00  
Inventory Check out - at Cost - approx £130.00 - £150.00  
Westminster Rates - Band D - £688.14

## £395 Per Week

Lettings: 020 7625 1000  
Sales: 020 7625 7000



[www.greenstone.com](http://www.greenstone.com)



[www.facebook.com/greenstoneproperty](https://www.facebook.com/greenstoneproperty)

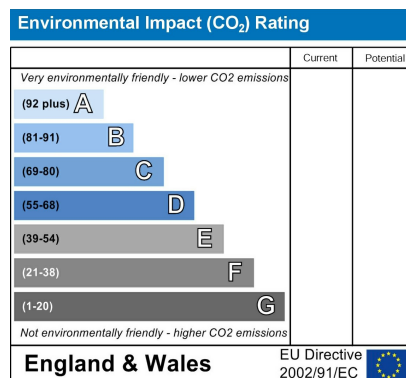
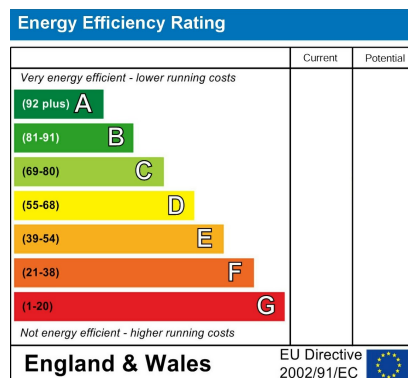
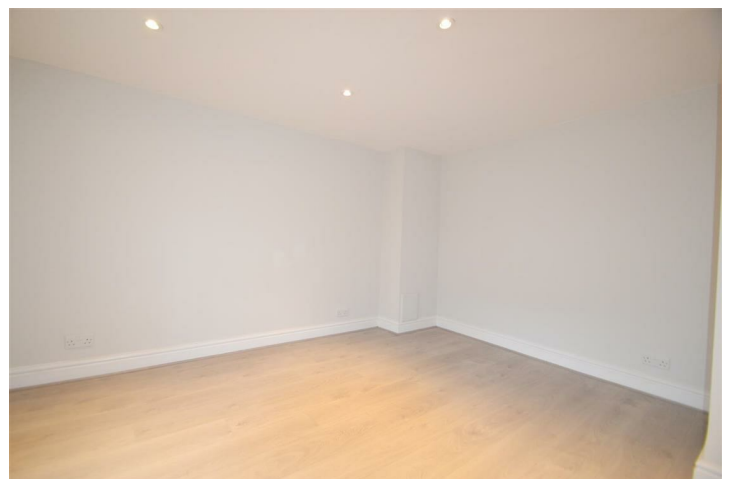


[www.twitter.com/lewisgreenstone](https://www.twitter.com/lewisgreenstone)



[www.youtube.com/user/greenstone](https://www.youtube.com/user/greenstone)





Lettings: 020 7625 1000  
Sales: 020 7625 7000



[www.greenstone.com](http://www.greenstone.com)



[www.facebook.com/greenstoneproperty](https://www.facebook.com/greenstoneproperty)



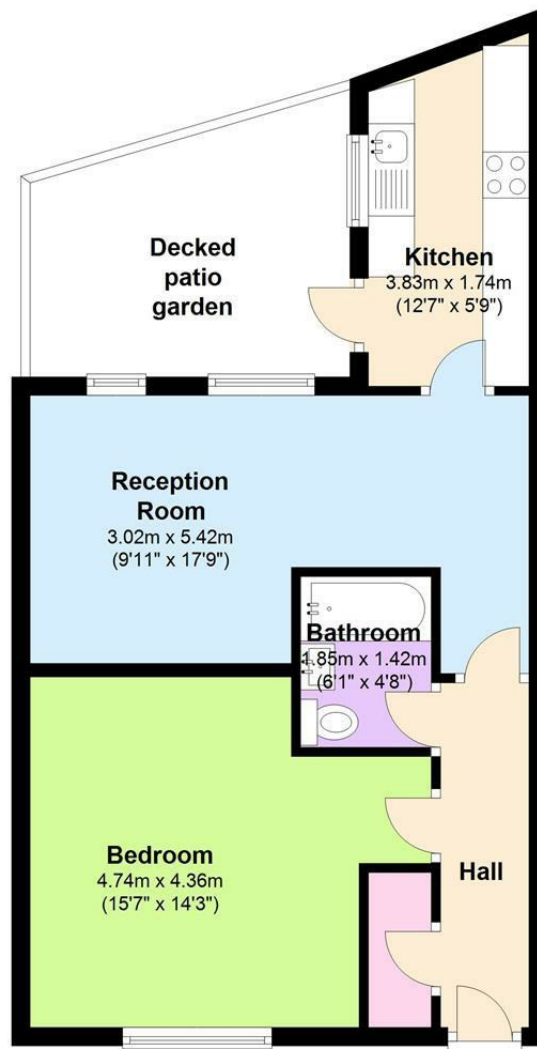
[www.twitter.com/lewisgreenstone](https://www.twitter.com/lewisgreenstone)



[www.youtube.com/user/greenstone](https://www.youtube.com/user/greenstone)



## Lower Ground Floor



**IMPORTANT NOTICE** All of the information is intended only as a guide to a prospective purchaser and does not constitute any part of an offer or contract. Any measurements or distances referred to herein are approximate only. Any information contained herein (whether in the text, plans or photographs) is given in good faith and cannot be relied upon as being a statement or representation of fact. Should you proceed with the purchase of the property, your solicitor must verify these details. We have not carried out a detailed survey nor tested the services, appliances and specific fittings. In accordance with current legislation we would advise you that the measurements on these particulars are imperial. The formula for conversion to metric is as follows:- 1' (one foot) = 30.4cm (centimetres), 1m (one metre) = 3'29 (feet).