



Cavendish Road | NW6



We are delighted to offer this very spacious (circa 1010 sq ft) and modern 2 double bedroom 2 bathroom apartment arranged on the Raised Ground floor of a very well maintained and attractive house in a popular, tree lined road in Brondesbury.

The apartment boasts an impressive glass wall feature in the hallway to reception room flooding the apartment with natural light. The reception room has wooden floors and views over the rear, separate and well designed eat-in kitchen with all appliances, guest wc, master bedroom with shower room en-suite and second bedroom with shower room en-suite.

Cavendish Road is sought after tree lined street ideally located within easy walking distance to numerous shops cafe's and restaurants of Queens Park's Salusbury Road. Excellent transport links being within a 10 minute walk of both Brondesbury Park and Brondesbury Overground stations and Kilburn Underground.

The area also offers excellent Schools with Malorees Junior School being a short walk.

The property is being offered with a brand new Lease and is chain Free.

Please call our sales department on for more information or a viewing.

£650,000

Lettings: 020 7625 1000
Sales: 020 7625 7000



www.greenstone.com



www.facebook.com/greenstoneproperty

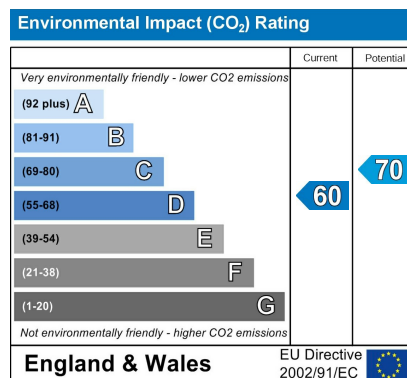
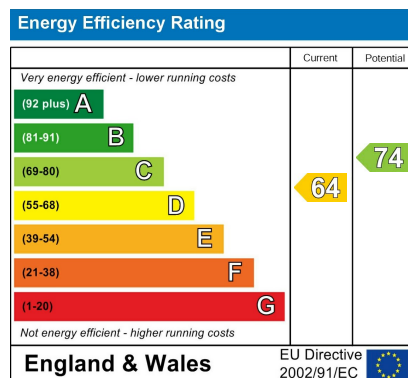


www.twitter.com/lewisgreenstone



www.youtube.com/user/greenstone





Lettings: 020 7625 1000
Sales: 020 7625 7000



www.greenstone.com



www.facebook.com/greenstoneproperty



www.twitter.com/lewisgreenstone

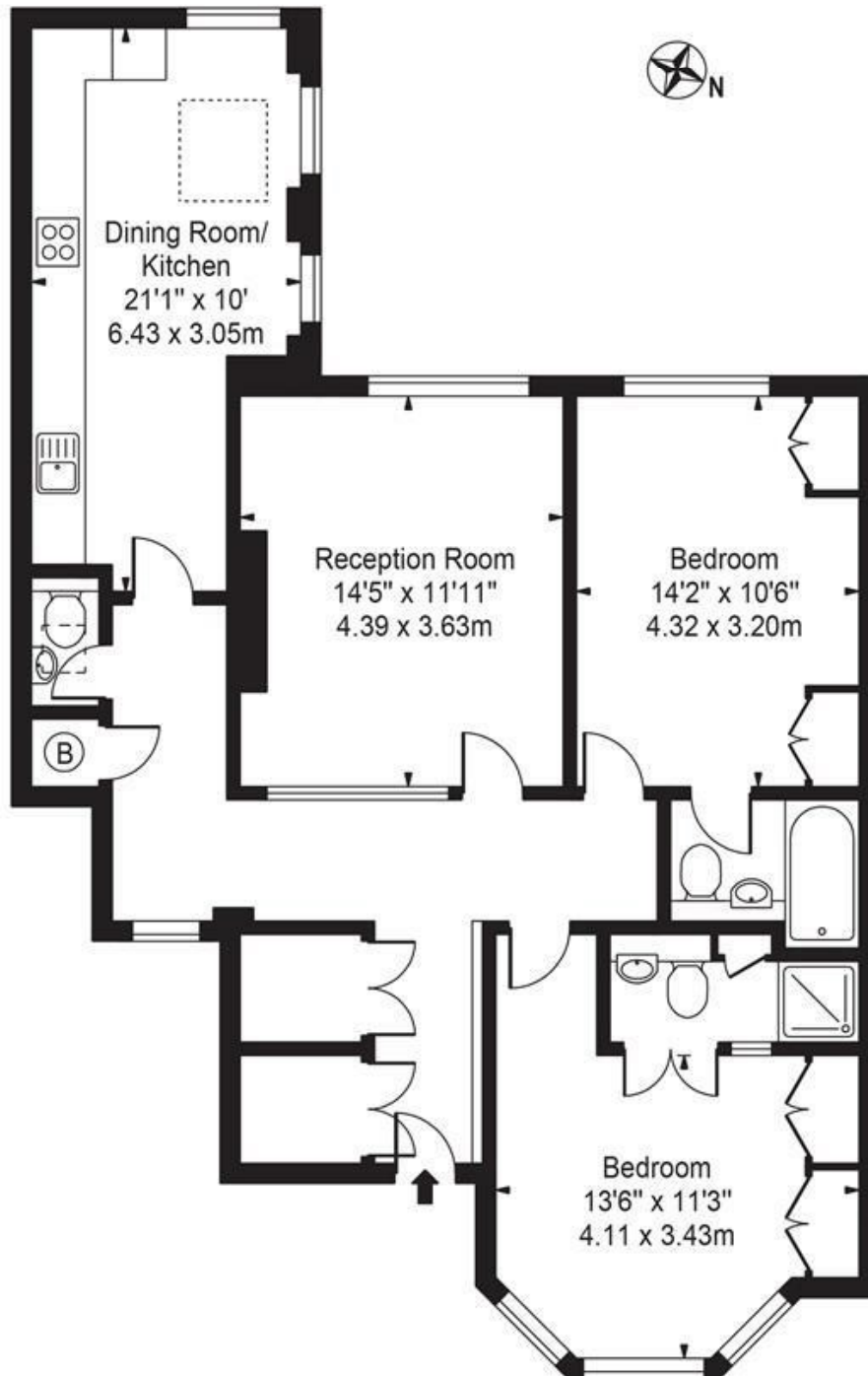


www.youtube.com/user/greenstone



Cavendish Road

Approx. Gross Internal Area 1010 Sq Ft - 93.83 Sq M



Raised Ground Floor
For Illustration Purposes Only - Not To Scale

This floor plan should be used as a general outline for guidance only and does not constitute in whole or in part an offer or contract. Any intending purchaser or lessee should satisfy themselves by inspection, searches, enquiries and full survey as to the correctness of each statement. Any areas, measurements or distances quoted are approximate and should not be used to value a property or be the basis of any sale or let.

IMPORTANT NOTICE All of the information is intended only as a guide to a prospective purchaser and does not constitute any part of an offer or contract. Any measurements or distances referred to herein are approximate only. Any information contained herein (whether in the text, plans or photographs) is given in good faith and cannot be relied upon as being a statement or representation of fact. Should you proceed with the purchase of the property, your solicitor must verify these details. We have not carried out a detailed survey nor tested the services, appliances and specific fittings. In accordance with current legislation we would advise you that the measurements on these particulars are imperial. The formula for conversion to metric is as follows:- 1' (one foot) = 30.4cm (centimetres), 1m (one metre) = 3'29 (feet).